

NOTES:
 SURVEYOR HAS MADE NO INVESTIGATION
 OR INDEPENDENT SEARCH FOR EASEMENTS
 OR ENCUMBRANCES. THE BEARINGS AND
 DISTANCES SHOWN ON THIS PLAN ARE BASED
 ON THE BEARINGS AND DISTANCES SHOWN
 ON THE PLATS REFERRED TO IN THE
 REFERENCES. THE SURVEYOR HAS MADE
 NO SEARCH FOR EASEMENTS OR
 ENCUMBRANCES THAT AN ACCURATE
 AND CURRENT TITLE SEARCH MAY DISCLOSE.

THE BEARINGS SHOWN ON THIS PLAN ARE BASED
 UPON GRID NORTH--GA EAST ZONE. GRID NORTH
 WAS TAKEN FROM GPS OBSERVATION AND IS NOT
 BASED ON A MAGNETIC OBSERVATION. THE
 BEARINGS SHOWN ON THIS PLAN MAY DIFFER
 FROM THOSE SHOWN ON PREVIOUS PLATS EVEN
 THOUGH THE LINES ARE THE SAME.

REFERENCES:
 --DEED BOOK 147 PAGE 686
 --DEED BOOK 176 PAGE 225
 --DEED BOOK 200 PAGE 220
 --PLAT BOOK 20 PAGE 282

EASEMENT LINES

Course	Bearing	Distance
A	N 47°37'39" E	10.11'
B	N 19°31'10" W	190.31'
C	N 41°47'04" W	190.31'
D	N 19°31'10" W	190.31'

Chd: S 49°22'41" E
 Tm: 97.65'
 CA: 152.39"
 190.27'

PLAT REVISED: 08 JULY 2014
 (TO SHOW SUBDIVISION TR 3)
 PLAT REVISED: 28 JUNE 2012
 (TO SHOW SUBDIVISION)

STATE OF GEORGIA
 WASHINGTON COUNTY
 99th G.M.D.

PLAT DATE: 28 MAY 2012
 FIELD SURVEY: 24 MAY 2012

FIELD E.O.C. = 1' IN 20,000' +
 ANGULAR ERROR = 05" PER < POINT
 PLAT E.O.C. = 1' IN 20,000' +
 ADJUSTMENT -- NONE

EQUIPMENT USED:
 TOTAL STATION
 SOKKIA CSR 270DSX CIPS UNITS
 MAX HORIZONTAL TOLERANCE = 0.05"

IP# = IRON PIN SET
 IP# = IRON PIN FOUND
 C# = CONCRETE MONUMENT FOUND
 C# = CONCRETE MONUMENT SET
 AP# = ANGLE IRON FOUND
 GB# = GRADER BLADE FOUND



DURDEN ROAD

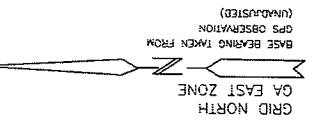
COURSE	BEARING	DISTANCE
1	S 26°45'56"W	106.87'
2	S 17°12'03"W	115.41'
3	S 05°15'23"W	60.10'
4	S 05°15'23"W	60.10'
5	N 88°46'23"W	18.85'

RAD.: 689.50' TANL: 147.42'
 LEN.: 280.47' DELTA: 24°08'13"

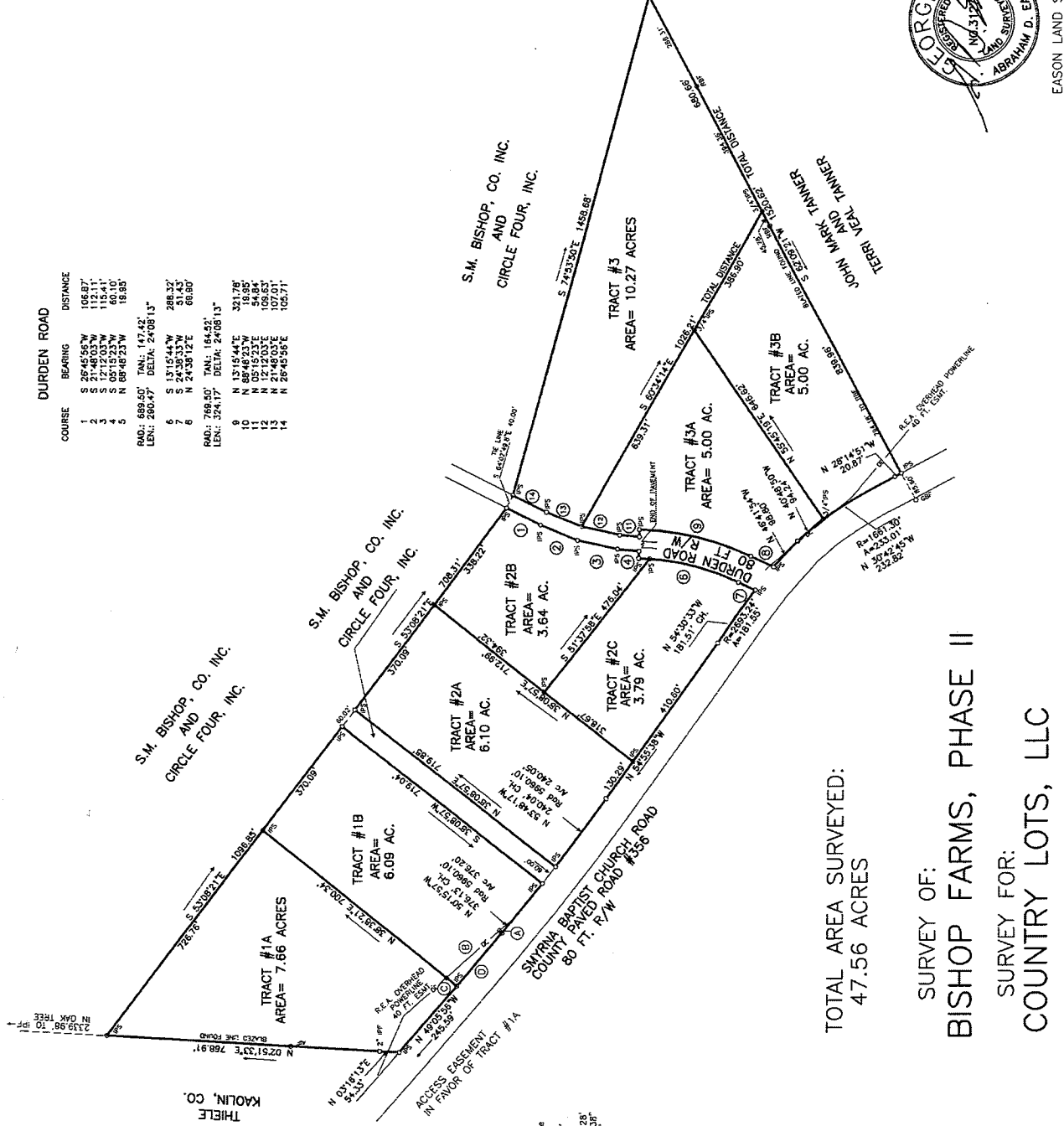
COURSE	BEARING	DISTANCE
6	S 137°15'44"W	288.32'
7	S 24°38'33"W	51.43'
8	N 24°38'12"E	68.80'

RAD.: 768.50' TANL: 164.52'
 LEN.: 324.17' DELTA: 24°08'13"

COURSE	BEARING	DISTANCE
9	N 137°15'44"E	321.78'
10	N 88°46'23"W	18.85'
11	N 02°15'33"E	158.84'
12	N 02°15'33"E	158.84'
13	N 21°46'03"E	107.01'
14	N 26°45'56"E	105.71'



EASON LAND SURVEYING
 P.O. BOX 753
 CLAXTON, GA. 30417
 (912) 739-7143



TOTAL AREA SURVEYED:
 47.56 ACRES

SURVEY OF:
 BISHOP FARMS, PHASE II
 SURVEY FOR:
 COUNTRY LOTS, LLC